



Programming the SBC83I Revision 1 Boards

The following documentation describes how to program the SBC83I-J10 and SBC83I-J11 Revision 1 boards. Future revisions of these boards will use the standard ICSP1 type connectors as shown on this page:

<http://www.modtronix.com/picboards/prog>

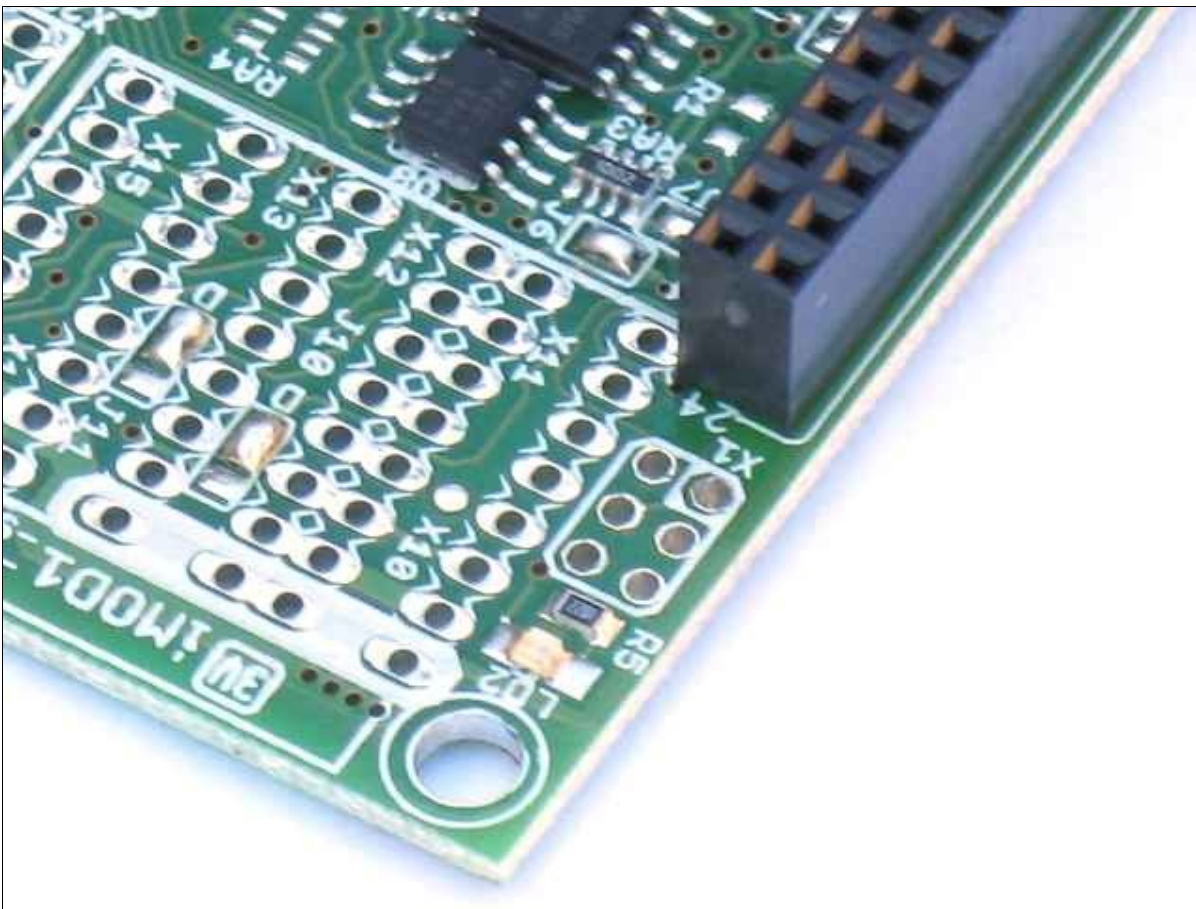
A PGM06 or PGM2KIT programming adapter is required to program the SBC83I boards with the ICD2 and PICKit 2 programmers. The procedure for programming them is the same as shown in the link given above, except that the small PGM02 board has to be replaced with the PGM6PF board.

It is **very important** to note that the standard cable supplied with the [PGM06](#) and [PGM2KIT](#) programming adapters are too long, and causes MPLAB to occasionally report errors during programming. To fix this, the cable has to be shortened, this is however very simple to do. When ordering a PGM06 or PGM2KIT programming adapter from us with your SBC83I board, we will supply it with a short cable, and PGM6PF board required to program a SBC83I Revision one board. If not ordering it with a SBC83I board, just add a comment during checkout that it is for programming a SBC83I board. The PGM06 and PGM2KIT programming adapters, and other programmers are available here:

<http://www.modtronix.com/index.php?cPath=32>

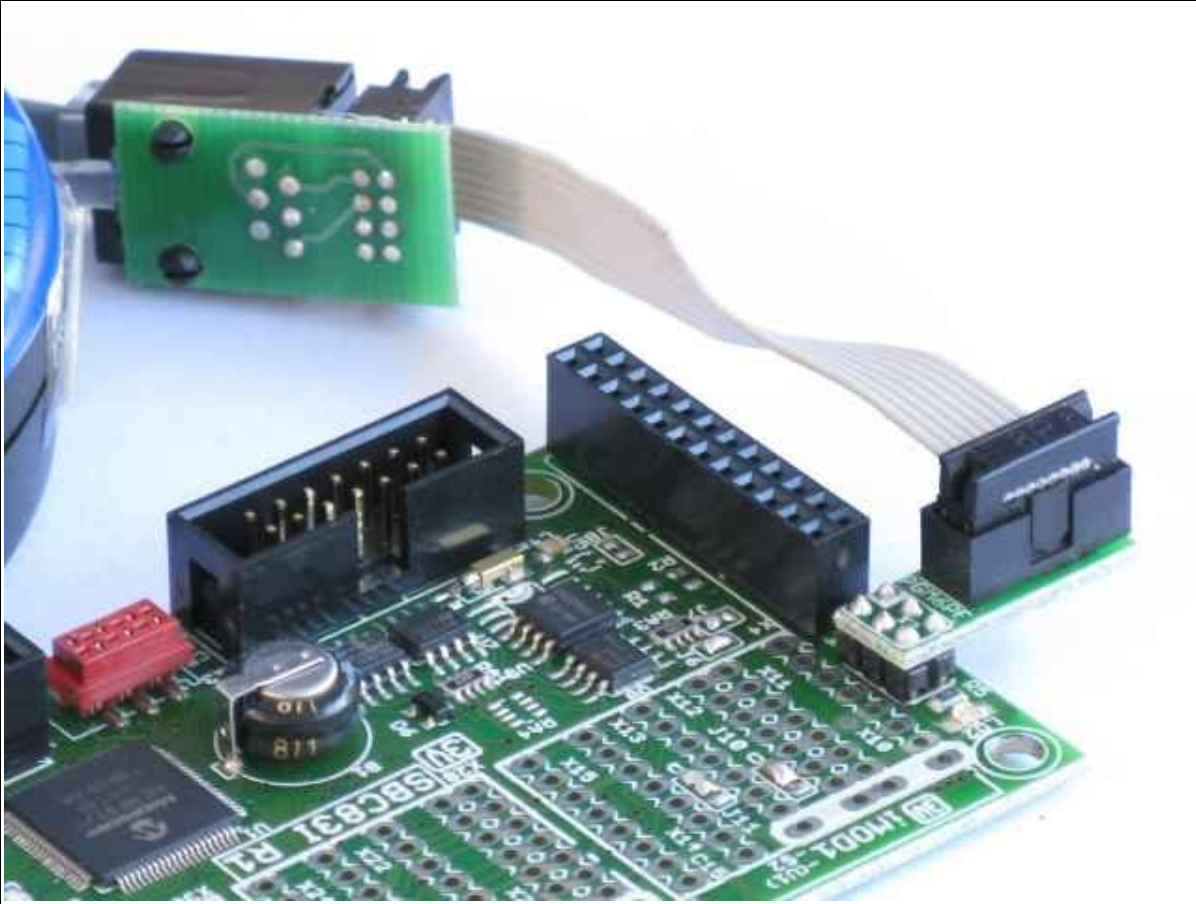
The PGM6PF board has 6 press-fit pins that fit into the X1 programming connector of the SBC83I board, as shown in Picture 1.

Picture 1: Shows the programming connector on the SBC83I revision 1 boards



Picture 2 shows how the programming adapter is fitted to the SBC83I to program it.

Picture 2: Programming the SBC83I revision 1 board



For additional information on programming our SBC boards with the ICD2 (and PGM06) and PICKit 2 (and PGM2KIT) programmers, see this link:

<http://www.modtronix.com/picboards/prog>

Ordering Programming Adapters for ICD2 or PICKIT 2 programmers

To order a PGM06 or PGM2KIT programming adapter for programming the SBC83I Revision 1 boards, go to the following link:

<http://www.modtronix.com/index.php?cPath=32>

And add the following comment during checkout:

“Programming adapter is for programming SBC83I rev1 board”.

We will then supply a special version of the adapter with a short cable, and PGM6PF board required to program a SBC83I Revision 1.